

# **USB Flash Memory TransMemory™**

## **Driver Installation Manual**

**Toshiba**

## Table of Contents

Chapter 1: Introduction.....	2
Chapter 2: Required System Configuration.....	3
Chapter 3: How to Install the Driver.....	4
1. Installing the driver.....	4
1.1 Installing when using Windows® 98SE.....	4

## Chapter 1: Introduction

Thank you for purchasing USB flash memory(TransMemory™). It has the following features.

- It is USB flash memory employing Toshiba's NAND flash memory. It can be used as a removable disk for a personal computer.
- U2B model products employ security software, allowing data that has been saved in the memory to be password-protected.
- Since it is bus-powered, an AC power adapter is not required.

※You can make full use of data that you have saved, but under copyright law, the rights of copyright holders may not be violated.

This document describes how to install TransMemory™, how to use it, and other information. Before using the product, be sure to read it thoroughly to ensure correct use.

### **T r a d e m a r k s**

- Microsoft® and Windows® are trademarks, registered in the United States and other countries, of Microsoft Corporation of the U.S.
- Macintosh® and Mac OS® are trademarks of Apple Computer, Inc.
- The USB logo mark is a trademark.
- Other companies and products mentioned herein are trademarks or registered trademarks of their respective owners.

## Chapter 2: Required System Configuration

The following are required to properly operate this product:

- Required hardware

• USB Specification-compliant USB port.

(Operation on self-built or modified PCs cannot be guaranteed.)

- Required operating systems

• Microsoft® Windows® 98 Second Edition

※ There is no need to install the following operating systems.

• Microsoft® Windows® Millennium Edition

• Microsoft® Windows® 2000 Professional

• Microsoft® Windows® XP Professional

• Microsoft® Windows® XP Home Edition

• MacOS9.0 or higher

## Chapter 3: Installing the Driver

This chapter describes how to install the driver to use this product. Be sure to install it correctly in accordance with the following explanation.

### 1. Installing the driver

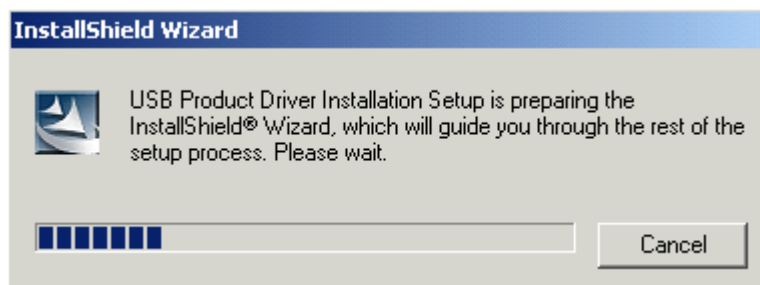
Be sure to install the driver before connecting TransMemory™ to the computer. Close all other applications.

#### 1.1 Installation using Windows® 98SE

- 1) Start up Windows® 98SE.
- 2) Access the Web download page.
- 3) Double click on the applicable file.
- 4) Click on Save (S) in the dialog box.
- 5) A dialog box asking where the software is to be saved appears. Select Desktop.
- 6) When the download is complete, a dialog box saying the download is complete appears. Click on Close.
- 7) On the desktop, the downloaded software named “Win98SE\_driver(EU).exe” appears as a new executable file. Double click on the icon.



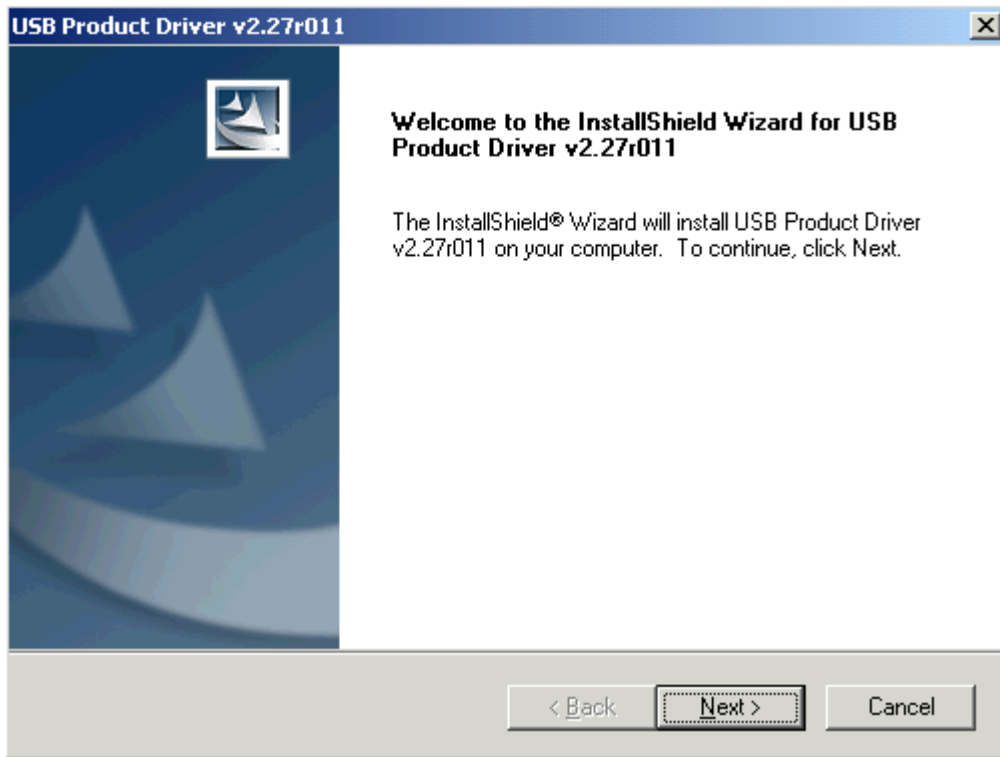
- 8) The driver installation program starts up. The following dialog box appears, then



# TOSHIBA

## USB Flash Memory Driver Installation Manual

When the following dialog box appears, click on Next (N).

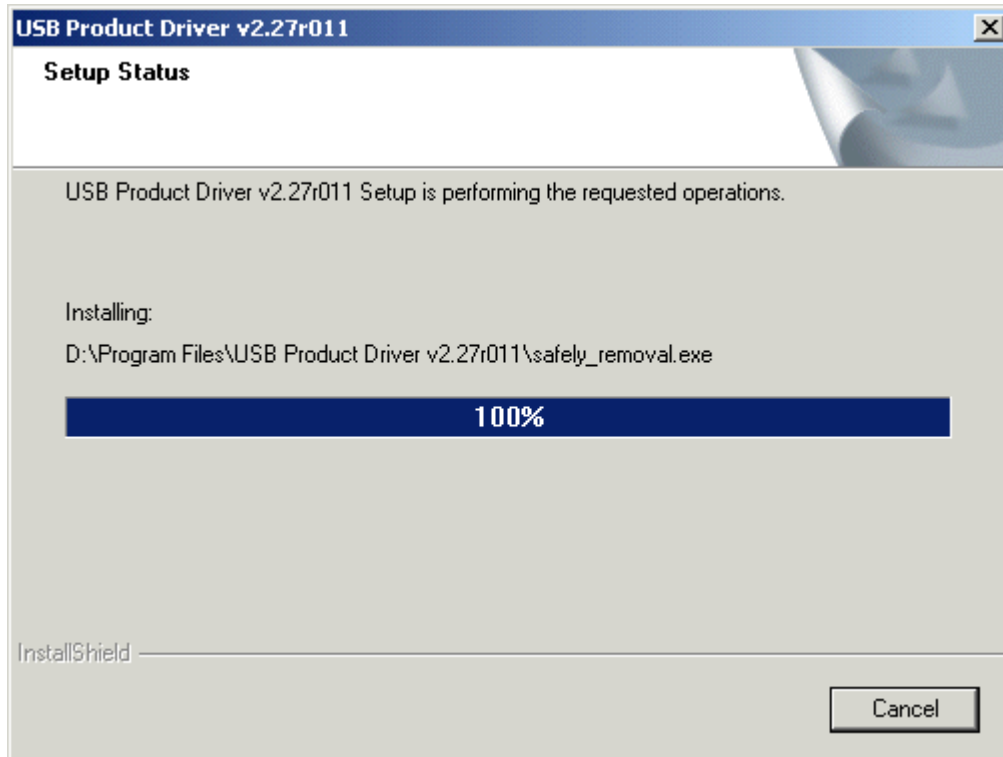


## TOSHIBA

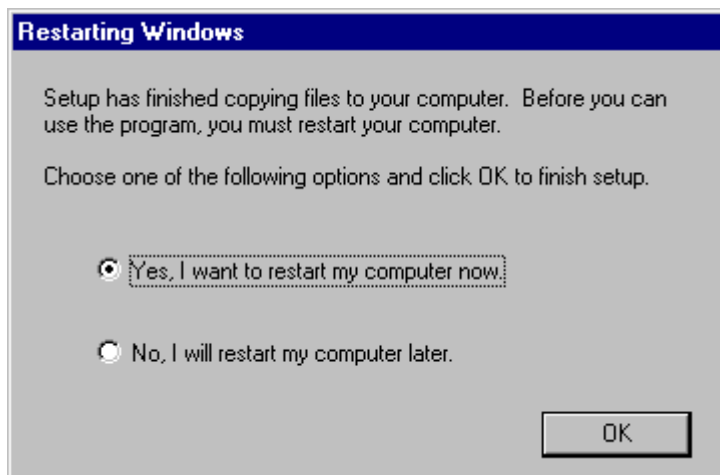
### USB Flash Memory Driver Installation Manual

---

The following dialog box appears, then automatically disappears.



9) When the following dialog box appears, click on OK. That completes installation of the TransMemory™ driver.



※Restart the computer and insert TransMemory™ into the USB port of the PC. Dialog boxes relating to new hardware will repeatedly appear on the screen, but you do not need to do anything. When the dialog boxes cease to appear, TransMemory™

# **TOSHIBA**

## USB Flash Memory Driver Installation Manual

---

can be used.

# TOSHIBA

## USB Flash Memory Driver Installation Manual

---

※If TransMemory™ is inserted into the USB port of the PC without following steps 1) – 9), the following dialog box appears. In that case, click on Cancel and repeat the procedures beginning with 1).



That completes the installation. Once the driver is installed, the computer will automatically recognize TransMemory™ when it is connected, and it can be used.

※ When installation is complete, the TransMemory™ executable file named “Ptype\_USB2.0\_TRANS\_Memory\_98SE\_J” may be deleted.

